



Proven Performance Since 1932.

SAFETY VALVES

“SURE-SHEAR” U-CLAMP ANCHOR

Application -

Secures any remote pump safety valve, conforming with NPFA Code 30.

Part Number - 521KR Patent Number 4,729,532

UNIVERSAL
Advantage



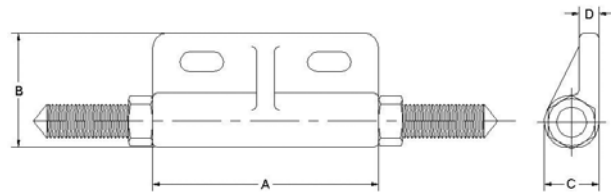
Only From Universal! A quick, easy and permanent way of mounting a safety valve. Saves time and money in anchoring.

Features -

- ✓ For retro-fit and new installations
- ✓ Eliminates need for expensive pump boxes or stabilizer kits
- ✓ Quick, easy and permanent
- ✓ Fits any major safety valve
- ✓ Saves time and money in anchoring
- ✓ Assures positive shearing action during accidental impact
- ✓ A securely anchored valve conforms with NPFA Code-30

Construction -

- Rugged plated cast iron body.
- Plated steel bolts, U-Clamp and hardware



Model	Size	Min.	Max.	Weight (lbs.)	A	B	C	D
521KR-8012	8" - 12"	8"	11-3/4"	4.0	5-1/8"	2-1/8"	1-3/8"	1/2"
521KR-1216	12" - 16"	12"	15-3/4"	4.4	5-1/8"	2-1/8"	1-3/8"	1/2"

Notice: Universal Valve Co., products must be used in compliance with applicable federal, state, and local laws and regulations. Product selection should be based on physical specifications and limitations and compatibility with the environment and material to be handled. Universal Valve Co., makes no warranty of fitness for a particular use. All illustrations and specifications in this literature are based on the latest production information available at the time of publication. Prices, materials, and specification are subject to change at any time, and models may be discontinued at any time, in either case, without notice or obligation.

